



TRINITY COLLEGE FOR WOMEN NAMAKKAL

Department of Computer Science

DATA MINING AND WAREHOUSING

19UAC -EVEN Semester

Presented by

Mrs.S.USHARANI

Assistant Professor

Department of Computer Science

<http://www.trinitycollegenkl.edu.in/>

What is Data Mining

- Data mining is the process of finding anomalies, patterns and correlations within large data sets to predict outcomes.
- Data mining (knowledge discovery from data)
Extraction of interesting (non-trivial, implicit, previously unknown and potentially useful) patterns or knowledge from huge amount of data.

Alternative names

Knowledge discovery (mining) in databases (KDD), knowledge extraction, data/pattern analysis, data archeology, data dredging, information harvesting, business intelligence, etc.

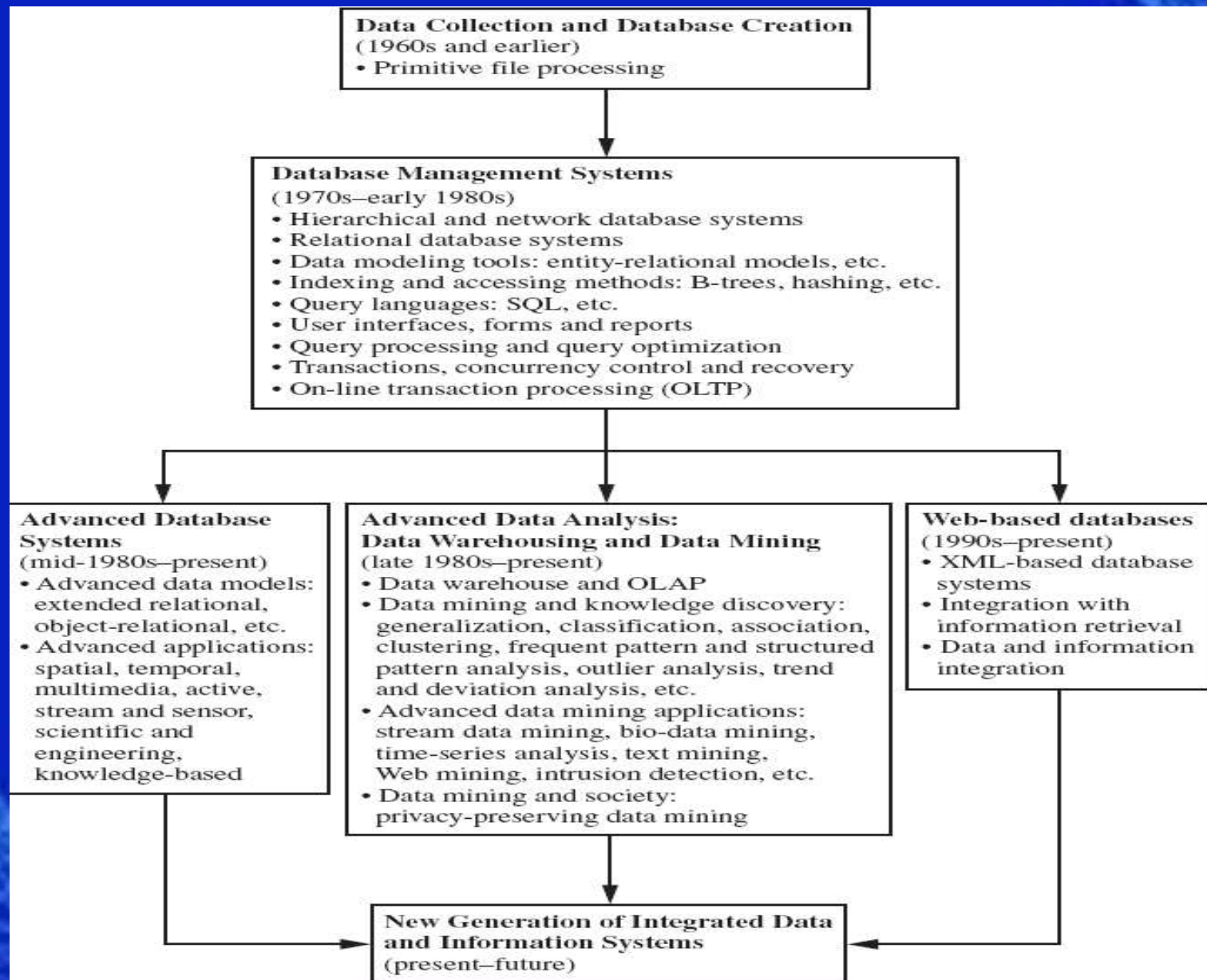
Why Data Mining?

- The Explosive Growth of Data: from terabytes(1000^4) to yottabytes(1000^8)
 - Data collection and data availability
 - Automated data collection tools, database systems, web
 - Major sources of abundant data
 - Business: Web, e-commerce, transactions, stocks, ...
 - Science: bioinformatics, scientific simulation, medical research ...
 - Society and everyone: news, digital cameras, ...
- Data rich but information poor!
 - What does those data mean?
 - How to analyze data?
- Data mining — Automated analysis of massive data sets

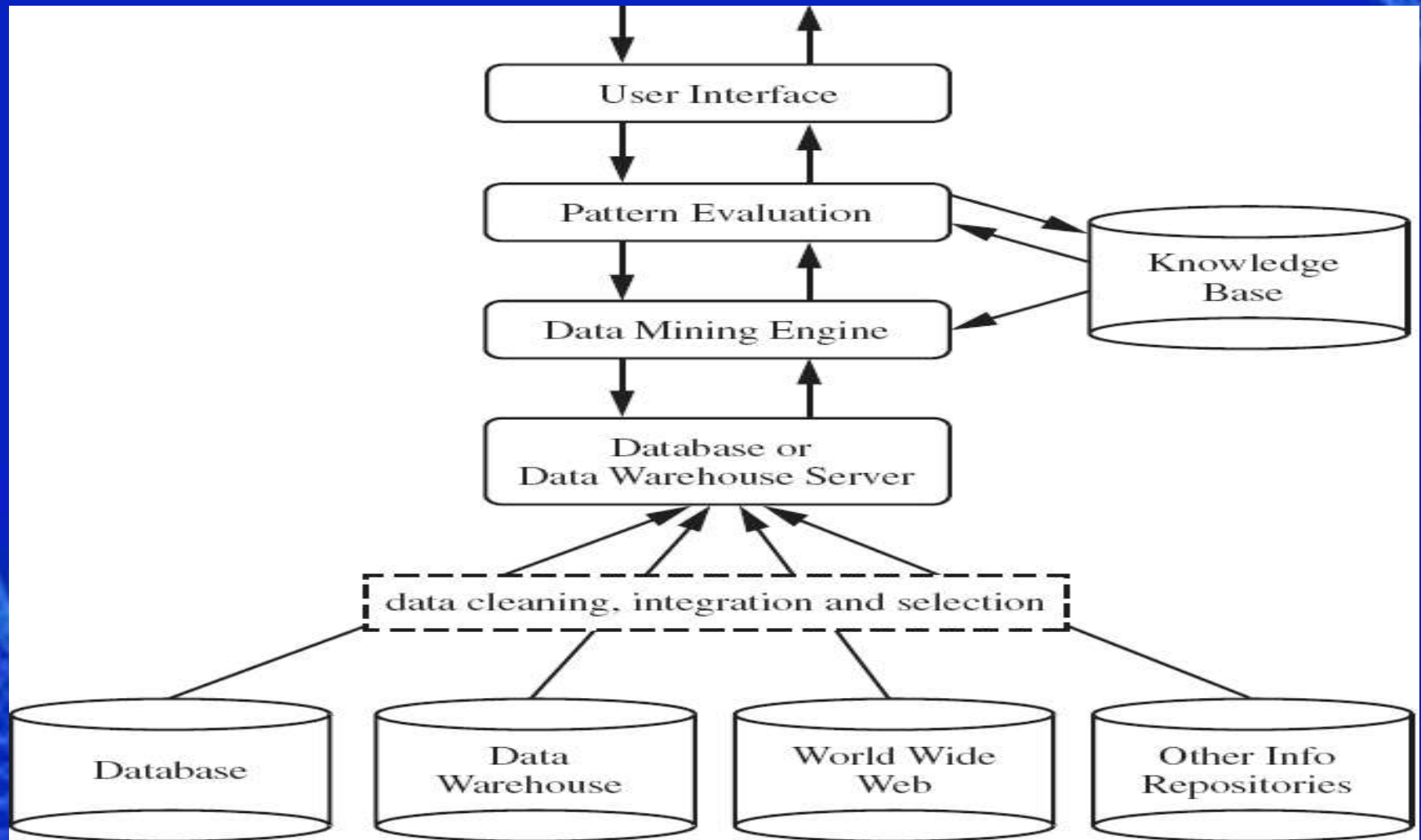
Potential Applications

- Data analysis and decision support
 - Market analysis and management
 - Target marketing, customer relationship management (CRM), market basket analysis, cross selling, market segmentation
 - Risk analysis and management
 - Forecasting, customer retention, improved underwriting, quality control, competitive analysis
 - Fraud detection and detection of unusual patterns (outliers)
- Other Applications
 - Text mining (news group, email, documents) and Web mining
 - Stream data mining
 - Bioinformatics and bio-data analysis

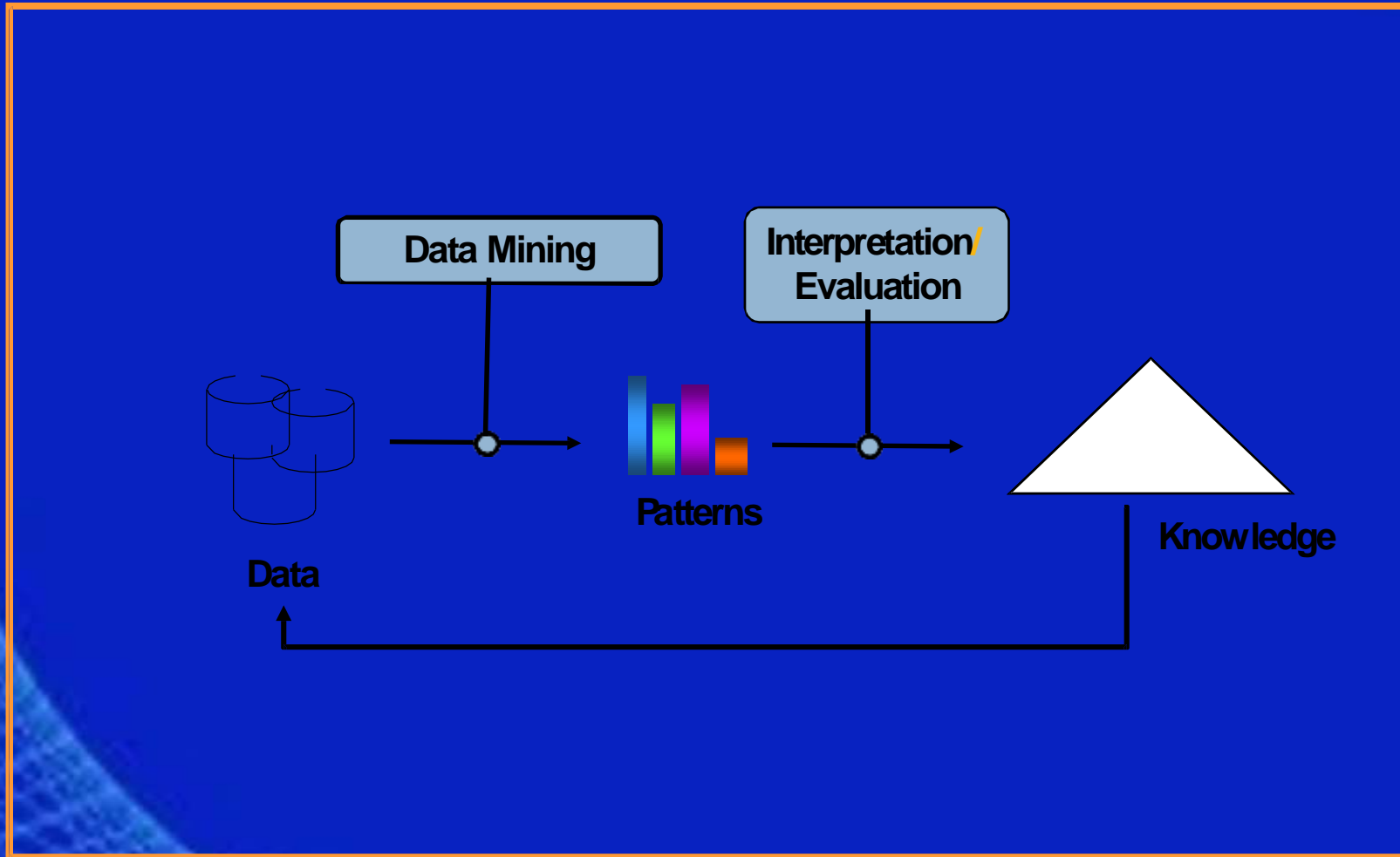
Evolution of Database Technology



A typical DM System Architecture



Knowledge Discovery in Data: Process



Knowledge Discovery in Data: Challenges

Volume

- Big Data
- Small Data



Data

Velocity

- Data Stream
- Static



Variety

- Transaction
- Temporal
- Spatial
- ...



Market Basket Example



- ? Where should discounts be placed in the store to maximize their sales?
- ? Are window-cleaning products purchased when detergent and orange juice are bought together?
- ? Is soda typically purchased with bananas? Does the brand of soda make a difference?
- ? How are the demographics of the neighborhood affecting what customers are buying?

Data Come from Everywhere



Grocery Markets



E-Commerce



Stock Exchange

But, they have different form



Hospital



Weather Station



Social Media

What is Data?

- Collection of records and their attributes
- An attribute is a characteristic of an object
- A collection of attributes describe an object

Objects

<i>Tid</i>	Refund	Marital Status	Taxable Income	Cheat
1	Yes	Single	125K	No
2	No	Married	100K	No
3	No	Single	70K	No
4	Yes	Married	120K	No
5	No	Divorced	95K	Yes
6	No	Married	60K	No
7	Yes	Divorced	220K	No
8	No	Single	85K	Yes
9	No	Married	75K	No
10	No	Single	90K	Yes

Types of Data

□ Record Data

- Transactional Data

□ Temporal Data

- Time Series Data
- Sequence Data

□ Spatial & Spatial-Temporal Data

- Spatial Data
- Spatial-Temporal Data

□ Graph Data

- Transactional Data

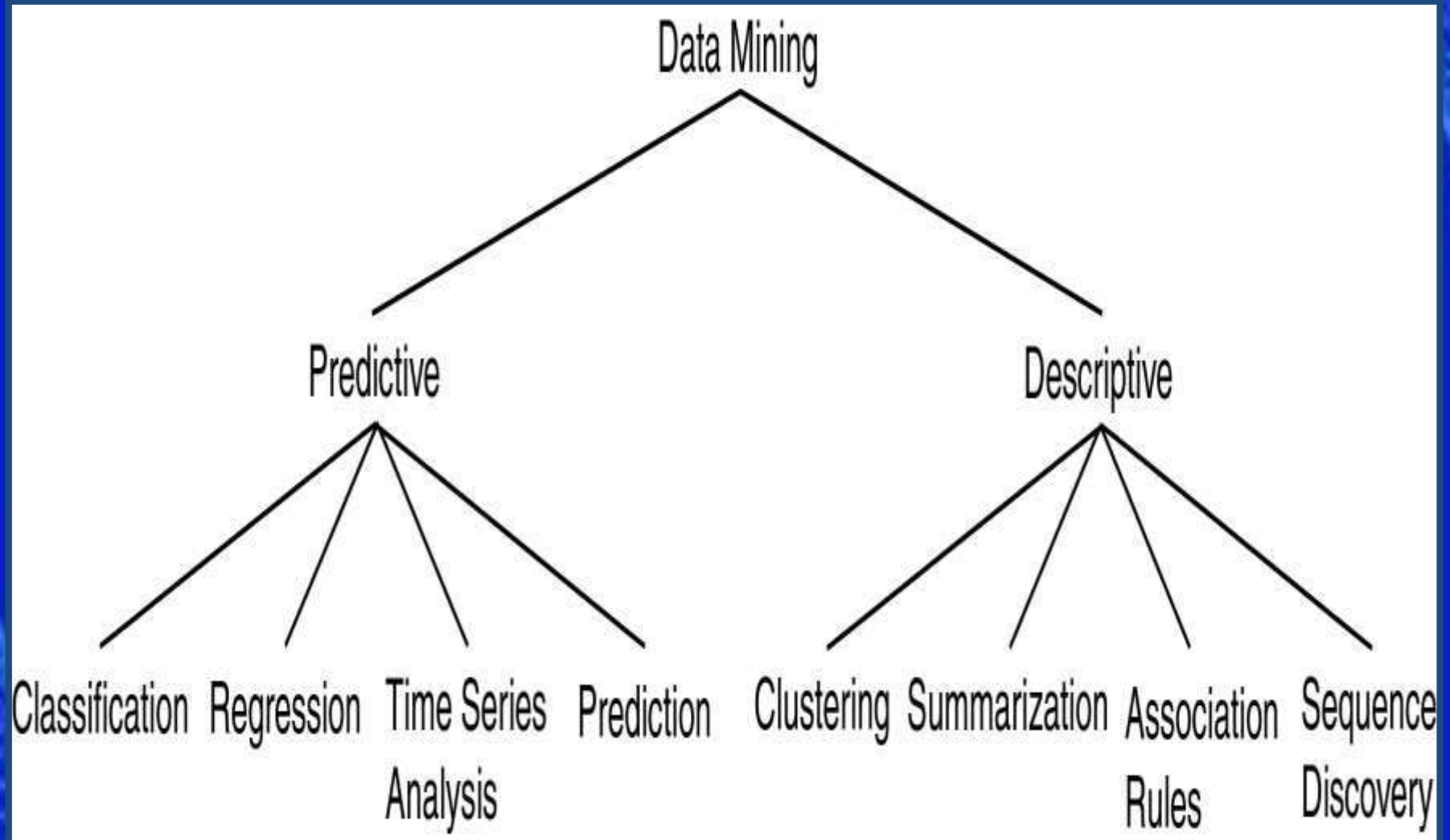
□ UnStructured Data

- Twitter Status Message
- Review, news article

□ Semi-Structured Data

- Paper Publications Data
- XML format

Data Mining Models and Tasks



Decisions in Data Mining

- **Databases to be mined**

- Relational, transactional, object-oriented, object-relational, active, spatial, time-series, text, multi-media, heterogeneous, legacy, WWW, etc.

- **Knowledge to be mined**

- Characterization, discrimination, association, classification, clustering, trend, deviation and outlier analysis, etc.
- Multiple/integrated functions and mining at multiple levels

- **Techniques utilized**

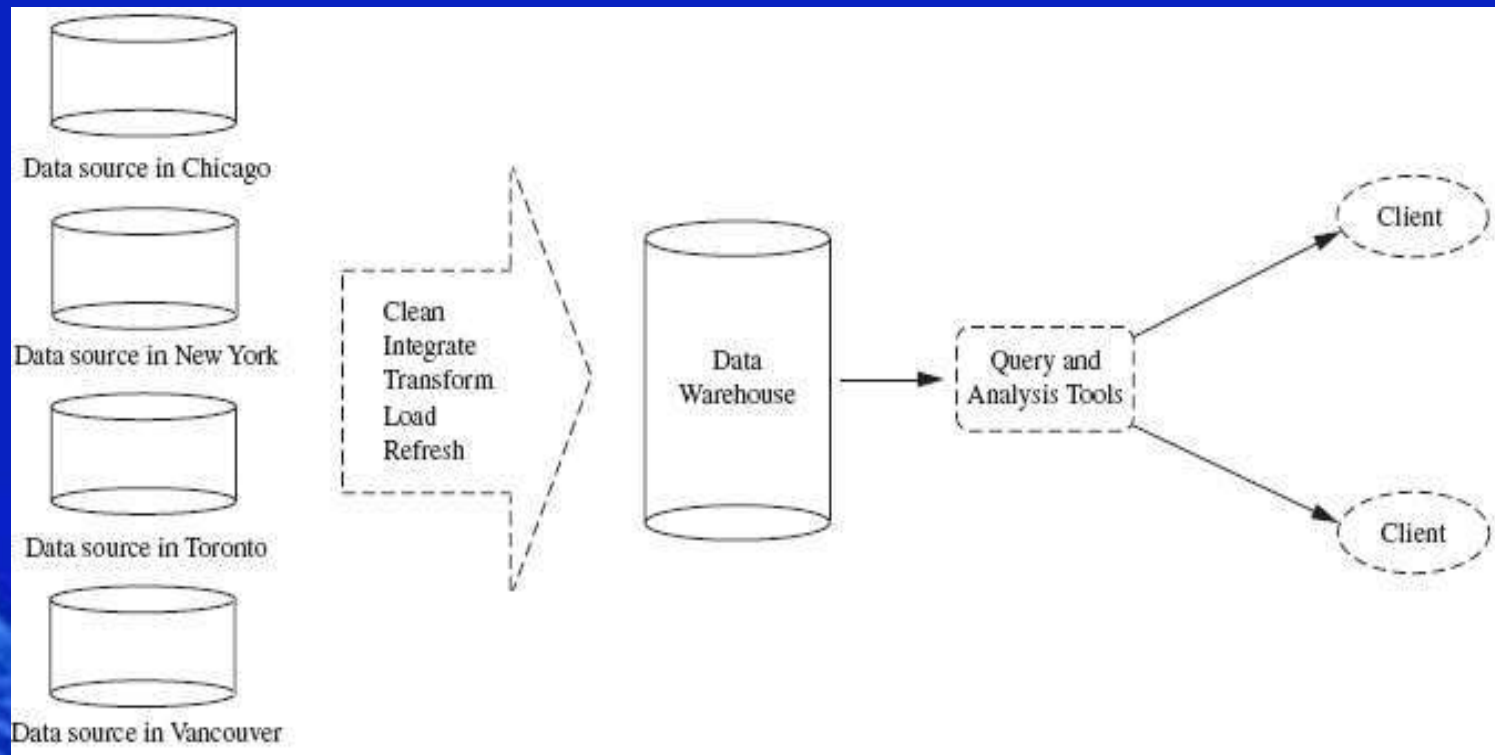
- Database-oriented, data warehouse (OLAP), machine learning, statistics, visualization, neural network, etc.

- **Applications adapted**

- Retail, telecommunication, banking, fraud analysis, DNA mining, stock market analysis, Web mining, Weblog analysis, etc.

Data Warehouses

- A repository of information collected from multiple sources, stored under a unified schema, and that usually resides at a single site.
- Constructed via a process of data cleaning, data integration, data transformation, data loading and periodic data refreshing.



THANK YOU

<http://www.trinitycollegenkl.edu.in/>