



TRINITY COLLEGE FOR WOMEN NAMAKKAL

Department of Computer Science

CLOUD COMPUTING

19PCSE10-EVEN Semester

Presented by

S.BHUVANESWARI

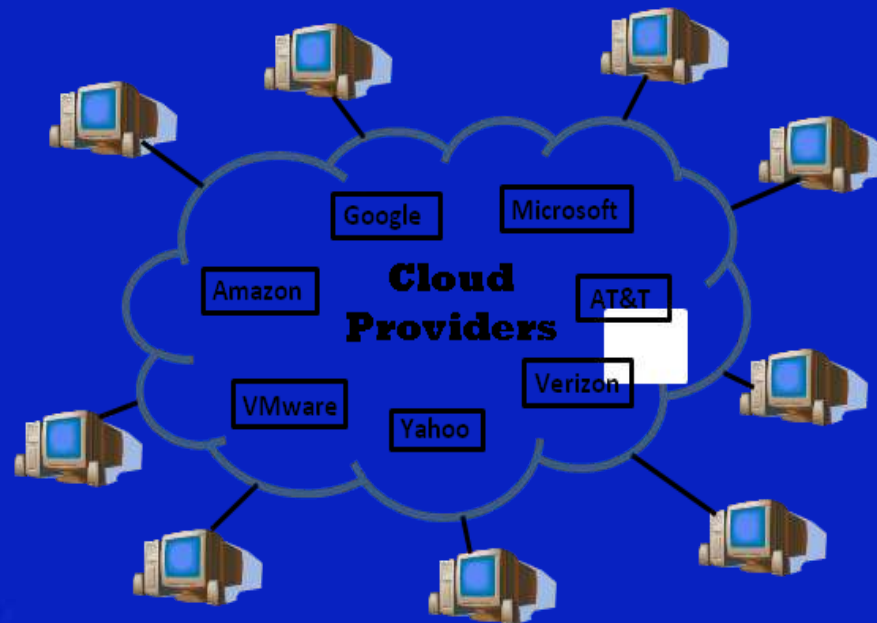
Assistant Professor

Department of Computer Science

<http://www.trinitycollegenkl.edu.in/>

Introduction

- ❑ Cloud computing is Internet-based computing, whereby shared resources, software, and information are provided to computers and other devices on demand, like the electricity grid.
- ❑ Cloud computing is a paradigm shift following the shift from mainframe to client-server in the early 1980s. Details are abstracted from the users, who no longer have need for expertise in, or control over, the technology infrastructure "in the cloud" that supports them.



WHAT IS CLOUD COMPUTING?

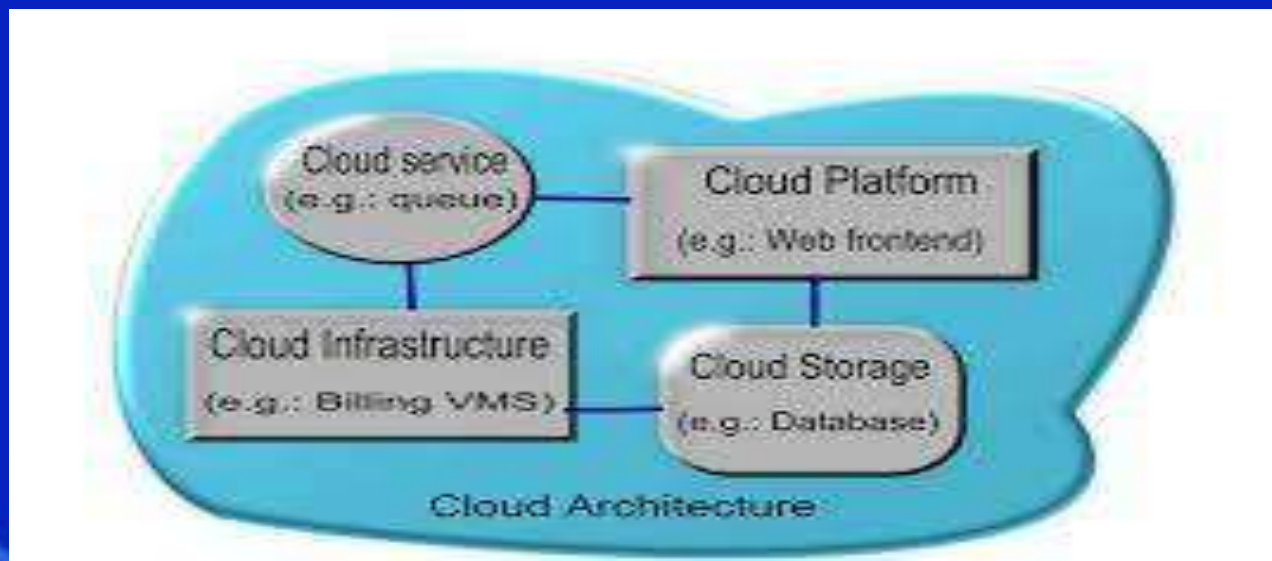
- ❑ Cloud computing is Internet based computing where virtual shared servers provide software, infrastructure, platform, devices and other resources and hosting to customers on a pay-as-you-use basis.
- ❑ All information that a digitized system has to offer is provided as a service in the cloud computing model. Users can access these services available on the "Internet cloud" without having any previous know-how on managing the resources involved.

HISTORY

- ❑ Concept originated from telecommunication companies changing to VPN
- ❑ 1999:Salesforce. com - Delivery of applications via web
- ❑ 2002: Amazon launches Amazon Web Services (AWS)
- ❑ 2006: Google Docs, Amazon Elastic Compute Cloud (EC2)
- ❑ 2008: Eucalyptus
- ❑ 2009: Microsoft Azure

ARCHITECTURE

- ❑ Cloud architecture, the systems architecture of the software systems involved in the delivery of cloud computing, typically involves multiple cloud components communicating with each other over application programming interfaces, usually web services.



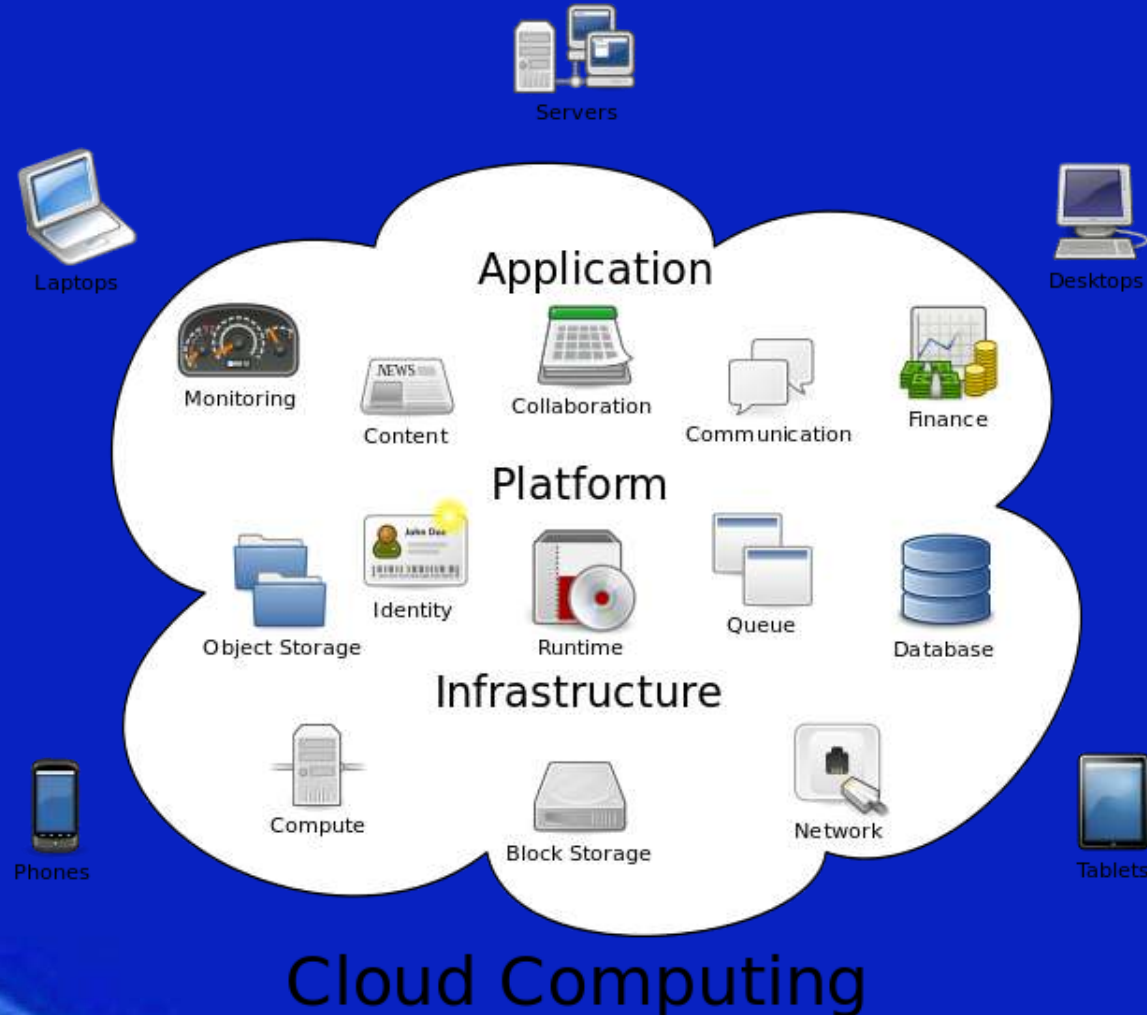
Cloud computing is an umbrella term used to refer to Internet based development and services

Introduction to *cloud context*

- ❑ Technology context: multi-core, virtualization, 64-bit processors, parallel computing models, big-data storages...
- ❑ Cloud models: IaaS (Amazon AWS), PaaS (Microsoft Azure), SaaS (Google App Engine)

- ❑ A number of characteristics define cloud data, applications services and infrastructure:
 - ❑ **Remotely hosted:** Services or data are hosted on remote infrastructure.
 - ❑ **Ubiquitous:** Services or data are available from anywhere.
 - ❑ **Commodified:** The result is a utility computing model similar to traditional that of traditional utilities, like gas and electricity - you pay for what you would want!

Cloud computing metaphor: For a user, the network elements representing the provider-rendered services are invisible, as if obscured by a cloud.

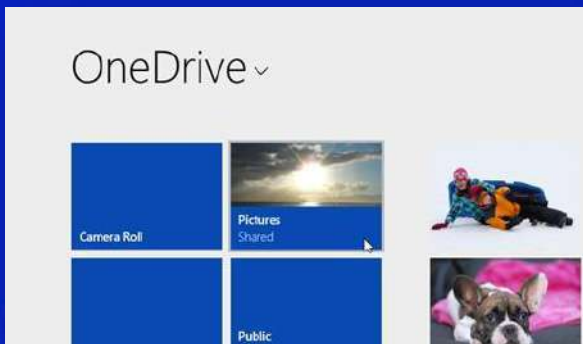


HOW TO USE A CLOUD STORAGE?... (EX: ONE DRIVE)



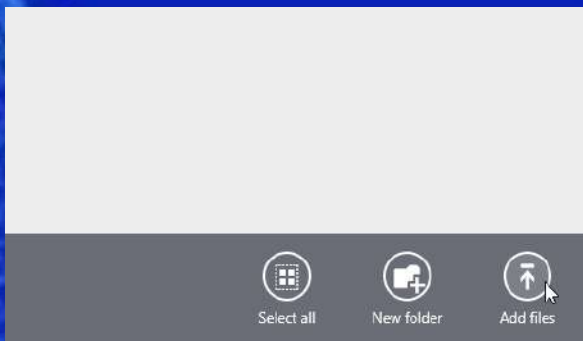
Step 1

On the Start screen, tap or click OneDrive to open the OneDrive app.



Step 2

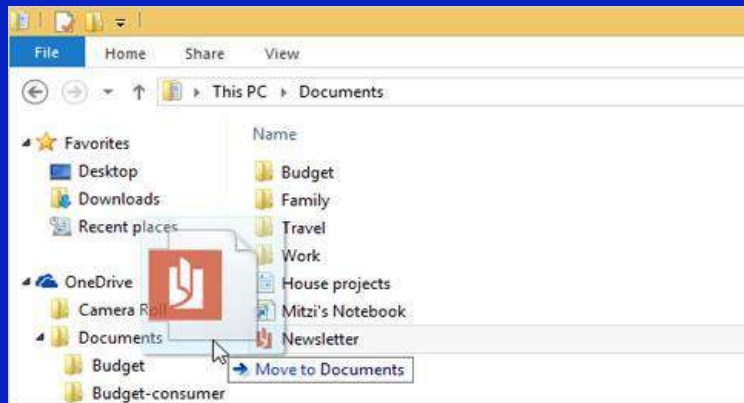
Tap or click folders to browse to the location on OneDrive where you want to add the files.



Step 3

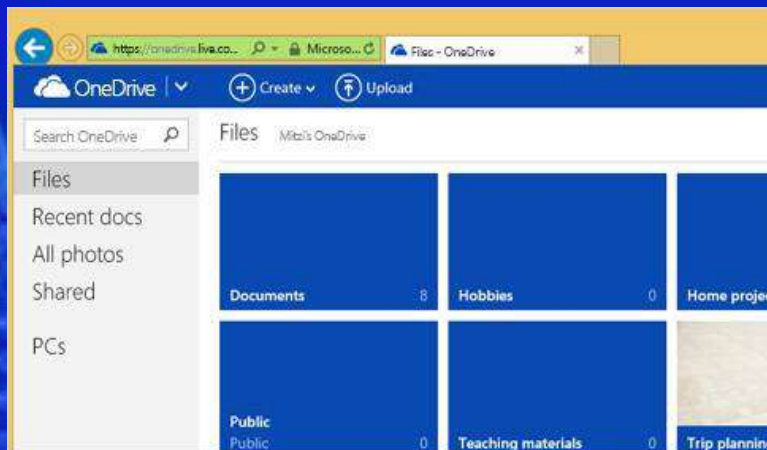
Swipe in from the top or bottom edge of the screen or right-click to open the app commands, and then tap or click Add files.

MOVING AND DOWNLOADING YOUR FILES....



To move files to OneDrive using File Explorer

When you move files, you're removing them from your PC and adding them to OneDrive. Drag files from the file list in the right pane to OneDrive in the left pane.



Getting to your files from anywhere When your files are in OneDrive, you can get to them from any device, even if something happens to your PC. You can go to the OneDrive website, or you can use one of the mobile apps for

THANK YOU

<http://www.trinitycollegenkl.edu.in/>